

AERO

CLASSIC MODELS

Features



- Wall and ceiling mounting.
- **Aero (127-220V/60Hz)** series models are equipped with specially designed motors compatible with both 127 V and 220 V power mains.
- Easy maintenance.
- Continuous operation.
- Backdraft damper.
- Ball bearing motor.
- Available in chrome (Aero Chrome) and gold (Aero Gold) decorations.
- 5 year warranty.



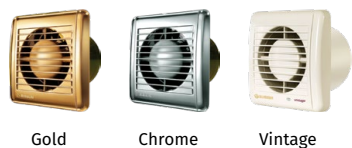
Air flow:
up to 309 m³/h
86 l/s



Power:
from 14 W
SFP:
from 0.28 W/l/s



Noise level:
from 38 dBA



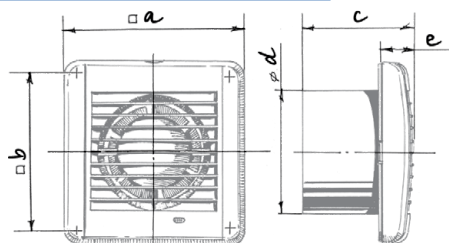
Options



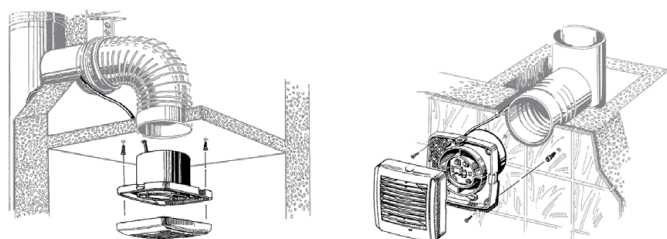
| Model | Aero 100/125/150 | | | | |
|------------------|------------------|---|----|---|----|
| Option | S | T | ST | H | SH |
| Pull-cord switch | • | | • | | • |
| Timer | | • | • | • | • |
| Humidity sensor | | | | • | • |

- Turn-off delay adjustable from 2 to 30 min.
- Humidity setpoint adjustable from 60 % up to 90 %.

Overall dimensions and mounting



| Dimensions [mm] | a | b | c | Ø d | e |
|-----------------|-----|-----|------|-----|------|
| Aero 100 | 144 | 122 | 92.5 | 100 | 29.5 |
| Aero 125 | 168 | 144 | 97 | 125 | 30 |
| Aero 150 | 198 | 170 | 119 | 150 | 30 |



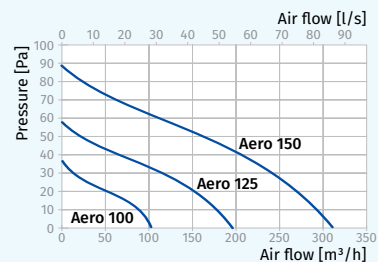
Designation key

| | | | | |
|-------|-------|-----------------|--------|-----------------|
| Aero | Gold | 100 | S | (127-220V/60Hz) |
| Model | Color | Spigot diameter | Option | Voltage |

Technical data

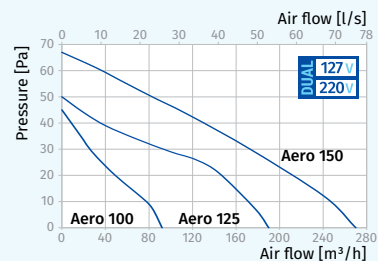
| Model | Aero 100 | Aero 125 | Aero 150 |
|------------------------------------|------------|------------|------------|
| Voltage [V/Hz] | 220-240/50 | 220-240/50 | 220-240/50 |
| Power [W] | 14 | 16 | 24 |
| Current [A] | 0.085 | 0.1 | 0.13 |
| RPM [min ⁻¹] | 2300 | 2400 | 2400 |
| Air flow [m ³ /h (l/s)] | 102 (28) | 193 (54) | 309 (86) |
| SFP [W/l/s] | 0.49 | 0.3 | 0.28 |
| Sound pressure level [dBA]* | 38 | 39 | 40 |

* Sound pressure level measured in free space at a distance of 3 meters from the fan.



| Model | Aero 100 (127-220V/60Hz) | | Aero 125 (127-220V/60Hz) | | Aero 150 (127-220V/60Hz) | |
|------------------------------------|--------------------------|---------|--------------------------|----------|--------------------------|----------|
| Voltage [V/Hz] | 127/60 | 220/60 | 127/60 | 220/60 | 127/60 | 220/60 |
| Power [W] | 10 | 9 | 16 | 15 | 25 | 25 |
| Current [A] | 0.115 | 0.054 | 0.119 | 0.102 | 0.175 | 0.338 |
| RPM [min ⁻¹] | 2500 | 2500 | 2400 | 2400 | 2350 | 2350 |
| Air flow [m ³ /h (l/s)] | 92 (26) | 92 (26) | 190 (53) | 190 (53) | 270 (75) | 270 (75) |
| SFP [W/l/s] | 0.39 | 0.35 | 0.30 | 0.28 | 0.33 | 0.33 |
| Sound pressure level [dBA]* | 34 | 34 | 36 | 36 | 39 | 39 |

* Sound pressure level measured in free space at a distance of 3 meters from the fan.



Accessories

| Duct system | Flexible air ducts | Grilles and hoods | Speed controllers | Clamps |
|-------------|--------------------|-------------------|-------------------|------------|
| | | | | |
| BlauPlast | BlauFlex | Decor, GM | CDT E1.8 | MCD 60/0.3 |